



SOUTH AUSTRALIAN
COLLEGE OF
ENGLISH



The Australian Experience of a Lifetime

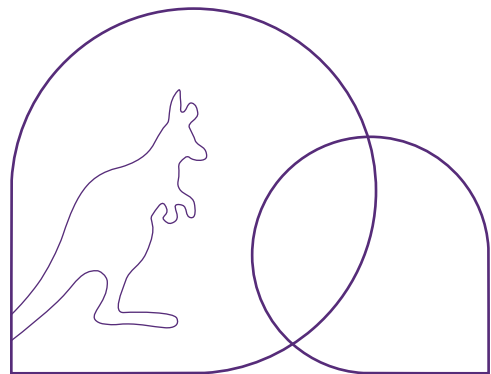


WELCOME TO SACE AUSTRALIA

The South Australian College of English (SACE), established in 1987, is one of Australia's longest-running and most respected English language colleges.

With a global reputation for excellence, SACE is known for:

- High-quality English courses across a wide range of programs.
- Dedicated, professional teachers who create an engaging and supportive learning environment.
- Comprehensive student services including homestay, counselling, and personalised support.
- Innovative programs such as English with Volunteering, Work Experience, Sports & Culture.
- A diverse international community with students from over 30 countries.



SACE is also an approved provider of Cambridge teacher training courses, with graduates teaching worldwide. Our strong links with Australian universities, VET colleges, and high schools offer students direct entry pathways and tailored educational guidance.

Whether for further study, career advancement, or travel, SACE courses help turn ambitions into reality.



The SACE Advantage



Quality Learning Environment

SACE offers a wide range of flexible courses tailored to individual needs, with options in length and intensity. Students benefit from personal counselling, regular progress checks, and highly skilled teachers who bring energy and expertise into the classroom. Small class sizes and a balanced nationality mix ensure a supportive and enriching experience.

Practical Real-Life English

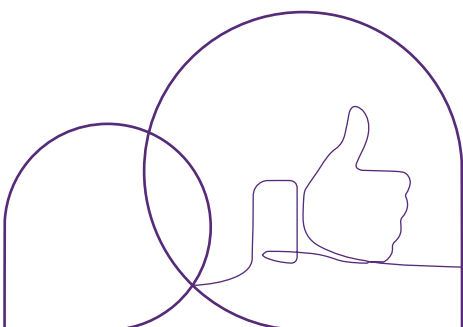
Our focus is on helping you communicate in English with confidence and accuracy. Courses strengthen speaking, listening, reading, and writing skills through engaging resources such as podcasts, media, guest speakers, and excursions. The SACE “English Only” policy, interactive lessons, and community programs provide real opportunities to practice English beyond the classroom.

Excellent Facilities

Students enjoy modern, air-conditioned classrooms, a self-access study centre with free Wi-Fi, and welcoming social areas including a student lounge and kitchen.

A Diverse Community

With students from over 30 countries, SACE offers a vibrant international environment and the chance to make lifelong friendships.



Student Services



Club SACE – Social Programmes

Club SACE offers students the perfect opportunity to connect with classmates and teachers through fun, affordable activities. Enjoy exciting excursions to exotic destinations in and around Adelaide, giving you the chance to experience the local culture and natural beauty firsthand.

These excursions alternate weekly with Conversation Club, where you can practise your English in a relaxed, friendly environment. Whether it's playing board games on campus or chatting over coffee at a local café or park, it's a great way to build confidence and make lasting friendships.

Accommodation

SACE carefully selects homestay families to ensure a warm, welcoming, and supportive home environment ideal for students adjusting to life in Australia. All homestays are conveniently located within easy access to public transport.

For those seeking alternative living arrangements, we also provide recommendations for reputable hostels and furnished flats.

Airport Transfers

A 24-hour airport pick-up service ensures Homestay students arrive safely at their accommodation.

Counselling & Support

Our staff are always available to help with academic advice, living in Australia, or planning further studies.

Education Placement

With nearly 40 years of experience, SACE provides free guidance and application support for students continuing to high school, TAFE, VET colleges, or universities across Australia.

Job Advisory Service

SACE offers free advice to help students find paid or voluntary work during their stay.





SACE Unique Features

Established in 1987, SACE Adelaide is a leader in English language training and student preparation for higher education.



Australian Government

Australian Skills Quality Authority



UNIVERSITY of CAMBRIDGE
ESOL Examinations

Authorised Centre

Why Choose SACE ?

- Accredited by ASQA (Australian Skills Quality Authority), the national regulator for Australia's vocational education and training sector, ensuring that all programs meet rigorous educational and compliance standards.
- Accredited by NEAS, the global benchmark for quality assurance in English language teaching, reflecting our commitment to excellence in academic delivery.
- Recognised Cambridge Teacher Training Centre and Cambridge Examination Centre in Adelaide.
- Official TOEIC Test Centre in Adelaide.
- Academic Preparation Programmes ready students for entry to South Australian universities, VET, and high schools.
- Direct Entry Programmes for Flinders University, TAFE South Australia and many other accredited institutions.



“

”

Adelaide The City

Capital of South Australia: multicultural, relaxed, and friendly, with safe beaches and ports.

Gateway to the Outback, located on the coast with white sandy beaches just 20–30 minutes from SACE and the city centre.

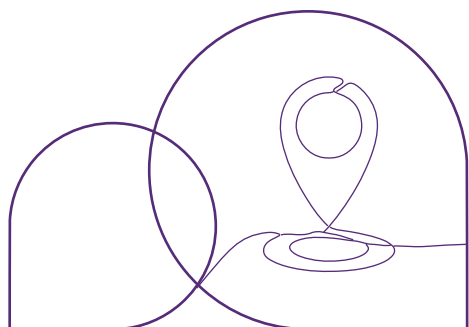
Planned city with a population of one and a half million people.

Hosts internationally renowned events: Adelaide Festival of Arts, Barossa Music Festival, Opera in the Outback, Pro Tour Cycling “Tour Down Under”, and regional food, wine, and cultural festivals.

At SACE, students can look forward to a vibrant and enriching experience through Club SACE activities including exciting weekly excursions, Conversation Club sessions, and practical job search guidance. All of this is offered in the peaceful and highly rated city of Adelaide, providing the perfect environment to live, learn, and thrive.

Join a dynamic community where learning is seamlessly blended with fun and cultural discovery

Safe, friendly, and affordable destination for international students.



ELICOS

General English Course (Day / Evening)

Programme Overview

SACE General English programmes are designed to improve students' English communication skills for study, work, travel, or career advancement.

Programme Options

General English Intensive

25 hours/week

General English Standard

20 hours/week

General English part-time

16 hours/week

Accelerated English

20 hrs General English Standard + 5 hrs Private Tuition

Private Tuition

Tailored one-to-one lessons available on demand.



Core Classes focus on:

**Grammar & Vocabulary, Speaking & Listening, Reading & Writing
Pronunciation in real-life situations**

Special Studies:

This is for students enrolled in 25hr p/w courses (General English Intensive & ETS) or can be purchased separately.

Specialised classes available are Academic Skills & Vocabulary in Context.

After Class Assistance

Self Access is available free of charge to all students after 3.30pm. Additional assistance available on request.

Course Duration: 2 - 48 weeks

Maximum Class Size: 18 students

Average Class Size: 14 students

Sample Timetable

Timings	Monday	Tuesday	Wednesday	Thursday	Friday
9:00 - 11:00	Intro to new unit, theme, grammar point & practise	Course work, presentation & practice, speaking	Course work, reading & vocabulary development	Course work, writing activity	End of unit test. Audio visual
11:30 - 1:30	English & the media, discussion games, vocabulary development	Listening & speaking activity, English skills for academic purposes	English through research & project work	Revision & consolidation	Conversation, debate & discussion
2:00 - 3:30	SPECIAL STUDIES 1 eg. Business English	SPECIAL STUDIES 2 eg. Conversation & Pronunciation	SPECIAL STUDIES 1 eg. Business English	SPECIAL STUDIES 2 eg. Conversation & Pronunciation	Weekly Excursion Or Self Access Learning

Evening Course (General English 20 Hours)

Timings	Monday	Tuesday	Wednesday	Thursday	Friday
5:00 - 7:00	Intro to theme	Grammar in use	Vocabulary / speaking	Writing / reading	Review / presentations
7:15 - 9:15	Reading / speaking	Reading / writing	Research skills, note taking, projects	Media studies / listening	Communication activities

Course Organisation

On the first day of each course students complete a full placement test before being placed in the appropriate level. Student's progress is monitored every four weeks. At the end of each term students also sit a Progress Test. At the end of the course students are awarded a SACE Certificate indicating their level of achievement.

Class levels: Elementary, Pre-Intermediate, Intermediate, Upper-Intermediate, Advanced



SACE Examination Courses

Cambridge Examination Programmes

Choose to study Cambridge at SACE and prepare for internationally recognised English qualifications:

FCE – First Certificate in English

CAE – Certificate of Advanced English

CPE – Certificate of Proficiency in English

SACE is the authorised Cambridge Test Centre in Adelaide.

Entry Level: **Upper-Intermediate Minimum**

Course Length: **12 weeks**

Age: **16+**

Hours: **20 hours per week**

Pearson (PTE) Academic Preparation course

The SACE PTE Preparation course, a 20 hour per week course provides an introduction and preparation for the PTE academic exam.

The course includes study of the four macro skills (Speaking, Listening, Reading, Writing) relevant to this exam plus Study Skills and PTE exam practice.

Entry Level: **Intermediate**

Course Length: **4 weeks**

Age: **16+**

Hours: **20 hours per week**

Sample Timetable

Timings	9:00 - 11:00	11:30 - 1:30
Monday	Introduction Grammar Vocabulary Speaking	Reading Authentic Material Word Building/ Speaking
Tuesday	Grammar in Use Writing Activities	Listening Speaking
Wednesday	Listening/ Reading Pronunciation Practice	Study Skills & Exam Techniques
Thursday	Writing	Speaking & Discussion Topics
Friday	Test - Vocabulary & Grammar Revision	Examination Practice
	Break 11:00 - 11:30	Lunch 1:00 - 1:45



Course Organisation

Cambridge CAE is recognised by the Australian Department of Immigration.

The Cambridge CAE is also recognised for entry to undergraduate and post graduate university courses.

Students are sent a Pre-Test to allow SACE to advise their English language proficiency and appropriate examination.

On the first week of each Cambridge Course students complete a range of sample Cambridge tests.

Students are individually counselled on their strengths and weaknesses, appropriate examination and study plan. All aspects of the examination are covered in the course.

Examination practice and exam techniques are an integral part of all courses.

Individual counselling, weekly progress reviews and additional Self Access assist students in achieving as much progress as possible.



Work, Volunteering & Teacher Training



English & Work Experience (Internship)

Since 1990, SACE has been a leader in combining English study with professional experience. Students complete a General English course followed by an unpaid work placement.

Popular fields:

Business • Accounting • Architecture • Media & PR
• Tourism & Hospitality • Education • Environment
• Childcare • IT

Entry Level: Upper-Intermediate
Course Length: 4+ weeks | **Age:** 18+

Business English Programmes

Develop the skills and confidence for success in the global business world.

- Simulated business situations
- Business communication and writing
- Marketing surveys, projects & guest speakers
- Preparation for TOEIC and business careers

SACE Adelaide is an authorised TOEIC Test Centre.

Teacher Training at SACE

Train to teach English at an internationally recognised Cambridge Teacher Training Centre in Adelaide.

Since 1992, SACE has helped both native and non-native English speakers begin rewarding teaching careers around the world.

Cambridge CELTA

(Certificate in English Language Teaching to Adults)

The Cambridge CELTA is the world's most respected English teaching qualification, designed for those starting or developing a teaching career. The course provides a strong foundation in:

- TESOL methodology and lesson planning
- Language analysis and classroom management
- Practical teaching and observation experience

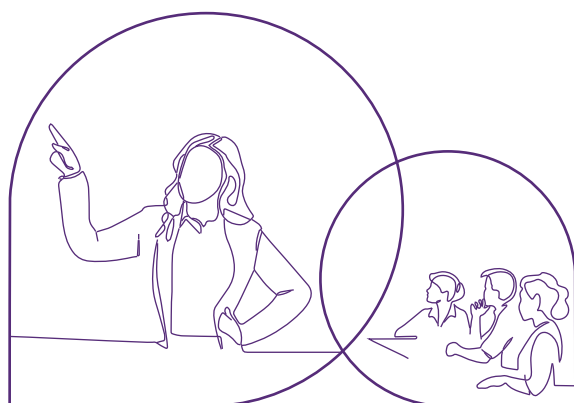
Course Formats:

Full-time (4 weeks) intensive online course

Part-time (10 weeks) online course

All trainees complete assessed teaching practice and observation, ensuring real classroom experience. CELTA graduates receive the same Cambridge certificate whether trained onsite or online.

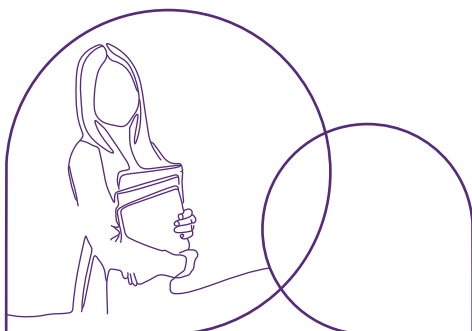
Recognised globally and credited by many Australian universities, SACE CELTA graduates have successfully gained teaching positions across **Asia, Europe, and South America.**



“

”

SACE Study Tours



English & Australian Cultural Experiences in Adelaide

SACE offers tailored study tour programmes to suit the individual needs of each student group. We work with agents and school administrations to develop a programme that suits their objectives and budget.

SACE has almost four decades of experience in hosting groups of international students.

Programme Options

- » Half-day or full-day English classes
- » Homestay accommodation & meals
- » Accommodation for teachers / staff
- » Airport pickup and drop off
- » Afternoon excursions (weekday)
- » Full-day weekend excursions
- » Transportation for excursions
- » Student metro cards
- » Open or closed classes
- » Local university visits
- » Certificate ceremony / farewell lunch
- » Special requests



Minimum
Duration
1 Week



Minimum
Student Age
13 Years



Minimum
Group Size
10 Students



SACE Pathway

Pathway Programmes to Further Education

Your gateway to higher education in Australia. SACE Pathway Programmes equip you with the English skills, confidence, and qualifications to achieve your academic and career goals.

English for Tertiary Study (ETS) - Direct Entry

The SACE English for Tertiary Study (ETS) courses prepare students for entry into Australian universities, TAFE, VET, and hospitality institutions. Designed to develop the academic English and study skills required for successful higher education.

Focus Areas:

Academic Reading | Critical analysis | Academic Writing |
Listening | Note-taking | Oral Presentations | Tutorials | Research |
Study Skills

Entry Requirements:

- ETS I: Upper Intermediate / IELTS 5.0
- ETS II: IELTS 5.5
- ETS III: IELTS 6.0
- ETS IV: IELTS 6.5

Direct Entry Pathways: University • TAFE • VET • ICHM • LCB

IELTS Preparation

An intensive 12–24 week course to prepare for the four main IELTS components:

Speaking, Listening, Reading, and Writing
(Academic + General)

Includes exam techniques, strategies, and full IELTS practice tests.

The IELTS exam measures English proficiency for academic, professional, or migration purposes.

SACE	Further Study Pathways
Intl. Secondary School Preparation Programme	> Secondary School
ETSI/IELTS Preparation	> Vocational College (TAFE, Hospitality/Tourism)
English for Tertiary Studies II, III, IV	> University & Hotel Management (Bachelor + Post Graduate Study)

Entry Level: Upper-Intermediate
Course Length: Min 12 weeks | Age: 16+
Hours: 25 per week

Entry Level: Upper-Intermediate
Course Length: 12+ weeks | Age: 16+
Hours: 20 per week



How to enrol at SACE



- 1 Complete the Enrolment Form and send it to your local SACE representative or directly to the South Australian College of English (SACE).
- 2 When we receive your Enrolment Form, SACE will send you a letter of offer and an invoice for payment of fees.
- 3 When SACE receives your fees we will send you a receipt and letter of acceptance or Confirmation of Enrolment (eCoE) depending on the type of visa you are applying for.
- 4 The Confirmation of Enrolment (eCoE) is needed if you intend to apply for a Student Visa. Submit it to the Australian Embassy/Consulate with your visa application.
- 5 If you have booked accommodation and airport transfer, advise SACE of your flight arrival details at least 4 weeks before your arrival. Your accommodation details will be forwarded to you on receipt of: a) Your flight details, b) full payment of fees.



**SOUTH AUSTRALIAN
COLLEGE OF
ENGLISH**



CRICOS: 00094M

Address

Woodards House, Level 1, 47
Waymouth Street, Adelaide
SA 5000, Australia

Telephone: +61 8 8410 5222

Email: registrar@sacecoll.sa.edu.au

Website: www.sace.edu.au

ABN: 32 008 156 161

Your SACE Representative